

Your Goals. Our Solutions.



Financial Reports



Budget



Company Structure

**CORE BANKING  
ADMIN**



الحل الأمثل والنظام الشامل لإدارة الأعمال  
The Total solution system for your business

A photograph of three business professionals in an office setting. On the left, a man in a dark suit and blue tie is smiling and looking towards the center. In the center, a woman with long brown hair, wearing a dark pinstriped suit jacket over a white collared shirt, is smiling broadly and holding a large, dark blue folder. To her right, another woman with dark hair pulled back, also in a dark suit jacket and white shirt, is smiling and looking down at the folder. The background consists of a large window with a grid pattern, showing a bright, sunny day. A semi-transparent blue banner is overlaid at the top of the image.

Your Goals. Our Solutions.



Wholesale &  
Retail E-ERP

# Enabling you to achieve your goals by cost effective & innovative integrated IT solutions

Most of the core banking solutions available in the world are not covering the general expenses and administration areas such as General Expenses (AP), Fixed Assets, Human Resources, and Time Attendance.

**OPTIMUM Core Banking Admin** is a very unique software designed to complement any core banking solution. It pulls and pushes all required financial and non financial data from and to the Core Banking solution. Basically it is seamlessly integrated with the core banking solution as one ERP Unit Software.

**OPTIMUM Core Banking Admin** is totally browser based. It is a true thin client so it can be used easily and without any setup over the Intranet and Internet. It uses the latest technologies of Microsoft Asp.Net and SQL server.

It is bi-lingual so you can logon in the language of your choice (Arabic-English).



## Core Banking Admin (E-ERP) Components:

1. Financial Management Module.
2. Procurement & Supply Chain Module.
3. Inventory Module.
4. Financial Management & Budgeting Module.
5. Fixed Assets Module.
6. HRMS & Payroll Module.
7. Time Attendance Module.



Company Structure



Budget



## General Sub Ledger

**OPTIMUM** General Sub Ledger is a fully-fledged Activity-based (ABC) ledger that has unlimited segments of chart of account, unlimited accounts setup, unlimited profit centers, and unlimited cost centers.

**OPTIMUM** General Sub Ledger is a multi-company, multi-branch and multi-currency system. It has a built in Customer/Vendor sub-ledger. Its powerful parameterization, drill down facilities, inquiries and reporting capabilities allow the user to reach to any information at a click of a key.

**Our powerful Accounts Parameterization feature facilitates greater flexibility and adaptability to suit any kind of business.**

**The customers can design their own parameters that are distinctive for their own organization.**

- Journal Vouchers.
- Pre-set Vouchers.
- Customers/Vendors pre-set vouchers.
- Auto-generation Vouchers.
- Budgeting & Forecast.
- Accounts Reconciliation.
- Financial Reporting

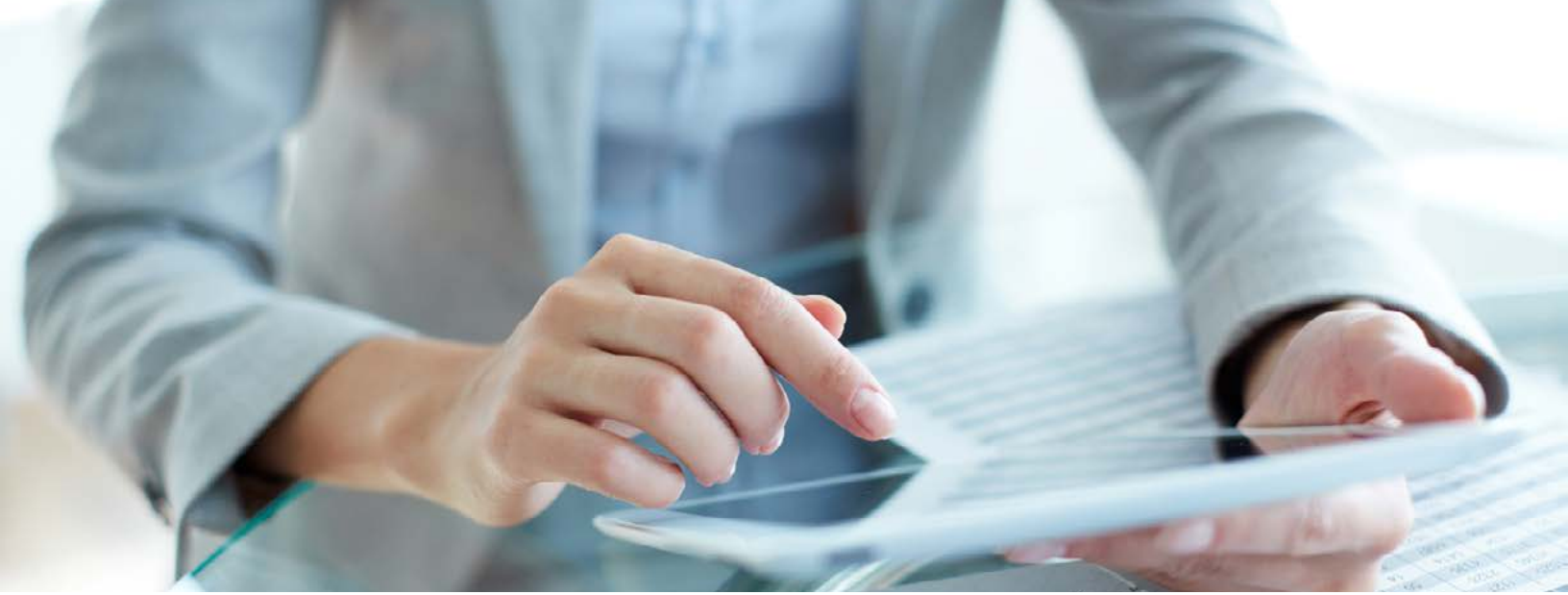


## Procurement & Supply Chain Module

The **OPTIMUM** Procurement & Supply Chain Module manages all aspects of the purchases and payment functionalities. It is a multi-currency system starting from departmental request till final payment. It has unlimited workflow levels and user authorization limits.

The **OPTIMUM** Procurement & Supply Chain Module is linked to the budget where controls can be set at the account level, profit centre level, cost centre level or a combination of all these. It has a full-fledged parameterized inquiry and reporting system that allows the user to retrieve any information needed.

- Departmental Requests Management.
- Vendor Requests for Quotation Management.
- Purchase Orders Management (Inventory - Non Inventory Items).
- Delivery Notes Management.
- Invoices Management (Direct & against Deliveries).
- Payment Management (Cheque - Transfer - A/C to A/C).
- Vendor's Profile Management.
- Payables Reporting & Inquiries Management.



## Inventory Management

**OPTIMUM** Inventory Management System controls the organizations' inventory, whether that inventory is for internal use or for resale.

The **OPTIMUM** Inventory system maintains for each stock a fully fledged master file containing all aspects such as the Re-Order level, Re-Order quantity, Lead time and so on. It has a multi-currency, multi-store, multi-location and multi-level inventory structure. The open parameterization structure, drill down facilities, and the inquiries and reporting capabilities give the best control over the organization's inventory.

- Inventory Received Management (Delivery Received Update).
- Store To Store Transfer Management.
- Direct Addition/Deduction Management.
- Assembly Management.
- Delivery Notes Management.
- Inventory Returns Management.
- Store Structure Management.
- Inventory Master Management.
- Inventory Reporting & Inquiry Management.



## Financial Management

**OPTIMUM** Financial Management is a fully-fledged Activity-based Cost accounting (ABC) ledger, that has unlimited segments of chart of accounts, unlimited accounts setup, unlimited profit centres, and unlimited cost centers.

**OPTIMUM** Financial Management is a multi-company, multi-branch and multi-currency system. It has a fully fledged built-in Customer/Vendor sub-ledger. Its powerful parameterization, drill down facilities, and inquiries and reporting capabilities allow the user to retrieve any information at the click of a mouse.

- Journal Vouchers
- Pre-set Vouchers
- Customers / Vendors.
- Auto-Generation Vouchers.
- Budgeting & Forecast
- Accounts Reconciliation
- Financial Reporting

**Our Powerful Accounts Parameterization features facilitates greater flexibility & adaptability to suit any kind of business.**

**The customers can design their own parameters that are distinctive for their own organization.**



## Fixed Assets Management

**OPTIMUM** Fixed Assets Management System is aimed at recording all the fixed assets bought or capitalized, whether these assets are tangible or intangible. It will keep track of all movements of these assets, whether these movements are from staff to staff or department to department or from one location to another.

**OPTIMUM** Fixed Assets Management System also keeps full track of the financial aspects of the assets i.e. original cost, depreciation, net book value, disposal, remaining life etc. It also keeps all related documents, and it has a full fledged reporting and inquiry system.

**Whenever needed, an online context sensitive help system pops up to assist & guide you through all the procedures.**

- Assets Management.
- Assets Financials.
- Assets Maintenance.
- Assets Movements.
- Assets Documents.
- Assets Insurance.
- Assets Tracking.





## Human Resources & Payroll

**OPTIMUM Human Resources & Payroll** covers all aspects of Human Resources required by any organization. It has a multi-company, multi-branch, and unlimited departmental structure. It is bi-lingual so you can logon in the language of your choice (Arabic-English).

**OPTIMUM Human Resources & Payroll** is totally parameterized so it can accommodate the laws, rules, regulations, policies and procedures of any country or organization.

**OPTIMUM Human Resources & Payroll** allows setting up many payroll templates in multi-currencies, and many payroll generations.

- Recruitment Management.
- Personnel Administration.
- Document Management.
- Attendance Management (Attendance, leave, sick leave etc.)
- Payroll Management.
- Loans Management.
- Organization Structure Management.
- Policies & Procedures Management.
- Appraisals & Forms Management.
- Staff Communication (Bulk Email, SMS etc).
- Training Management.
- Self Services Management.
- Inquiries & Reporting.



## Time & Attendance Management

**OPTIMUM Time & Attendance Management** OPTIMUM Time & Attendance Management system has been designed to manage the manifold and complex processing of your company's employee time and attendance data. The module may be linked to OPTIMUM Personnel Administration and Payroll module, to work as an integrated system.

The users will be able to organize and manage the company's time and attendance data with little effort as well as generate required reports with ease, The employees' time and attendance may be tracked by any type of data capturing machine, such as swipe cards and/or finger prints that can also be linked to door access/main gates.

**OPTIMUM Time & Attendance** System structure allows the user to parameterize any type of shifts and special policies required by the organization.

### **Access Control:**

- Live Monitoring with Dashboard.
- Remote Door Control.
- Facility to Enter Data Manually.

### **Roster Management:**

- Create All Types of Rosters.
- Dashboards for Management & Staff.

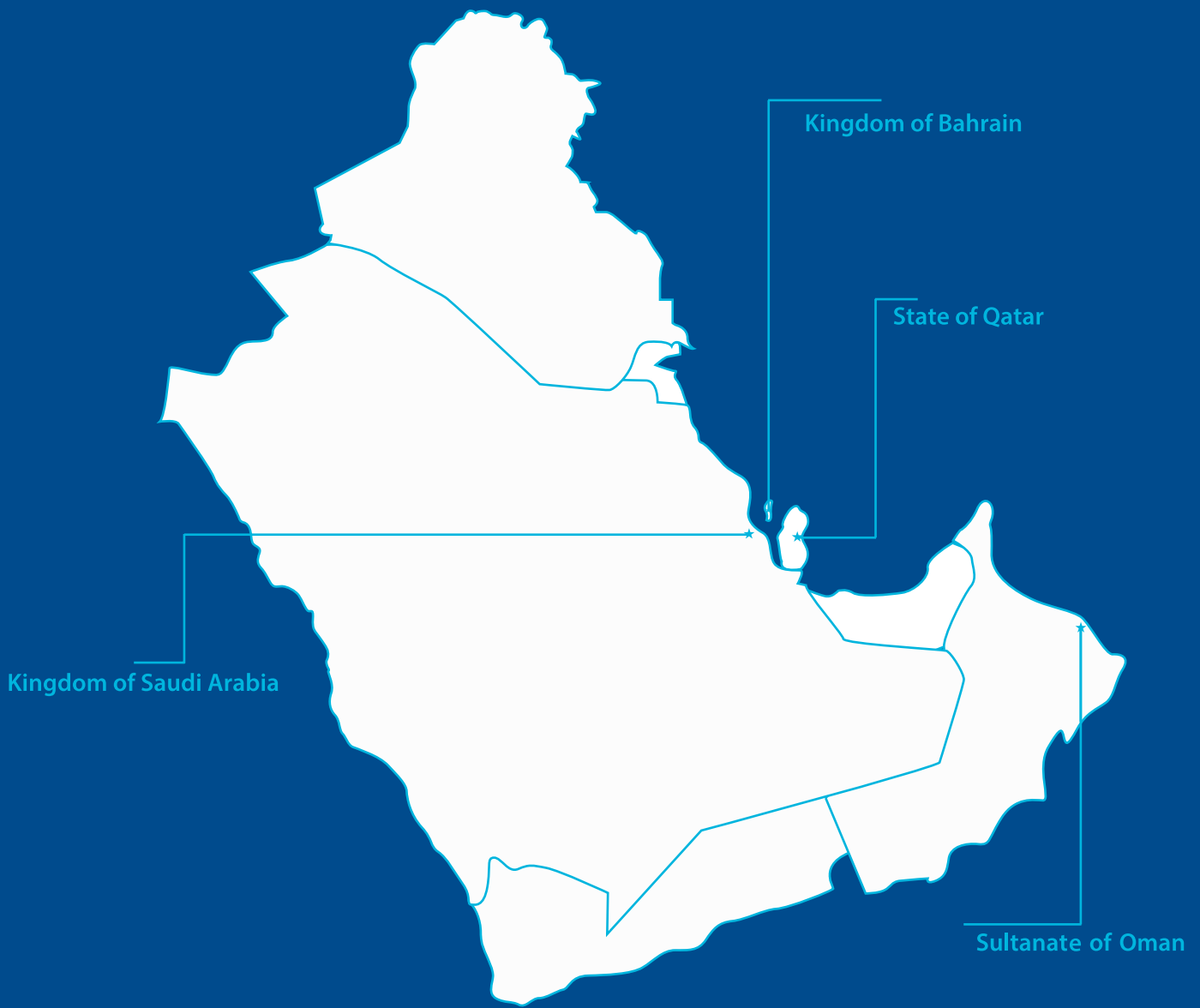
### **Attendance Management:**

- Late In Monitoring.
- Early Out Monitoring.
- Break Monitoring (Absence During working hours.
- Absence Monitoring.
- Overtime Monitoring.



Al-Arminthal  
GROUP

COMPANY PROFILE



## Regional Offices

### Bahrain

P.O. Box 2949  
 Manama, Kingdom of Bahrain  
 Tel. +973 17 297227  
 Fax. +973 17 297 337

### Qatar

P.O. Box 31122  
 Doha, State Of Qatar  
 Tel. +974 4491 3232  
 Fax. +974 4491 3231

### Saudi Arabia

P.O. Box 3674  
 Al Khobar, Kingdom of Saudi Arabia  
 Tel. +966 3 889 0022  
 Fax. +966 3 889 8285

### Oman

P.O. Box 1801  
 Muscat, Sultanate of Oman  
 Te . + 968 2447 2223/4  
 Fax. +968 2448 1867

